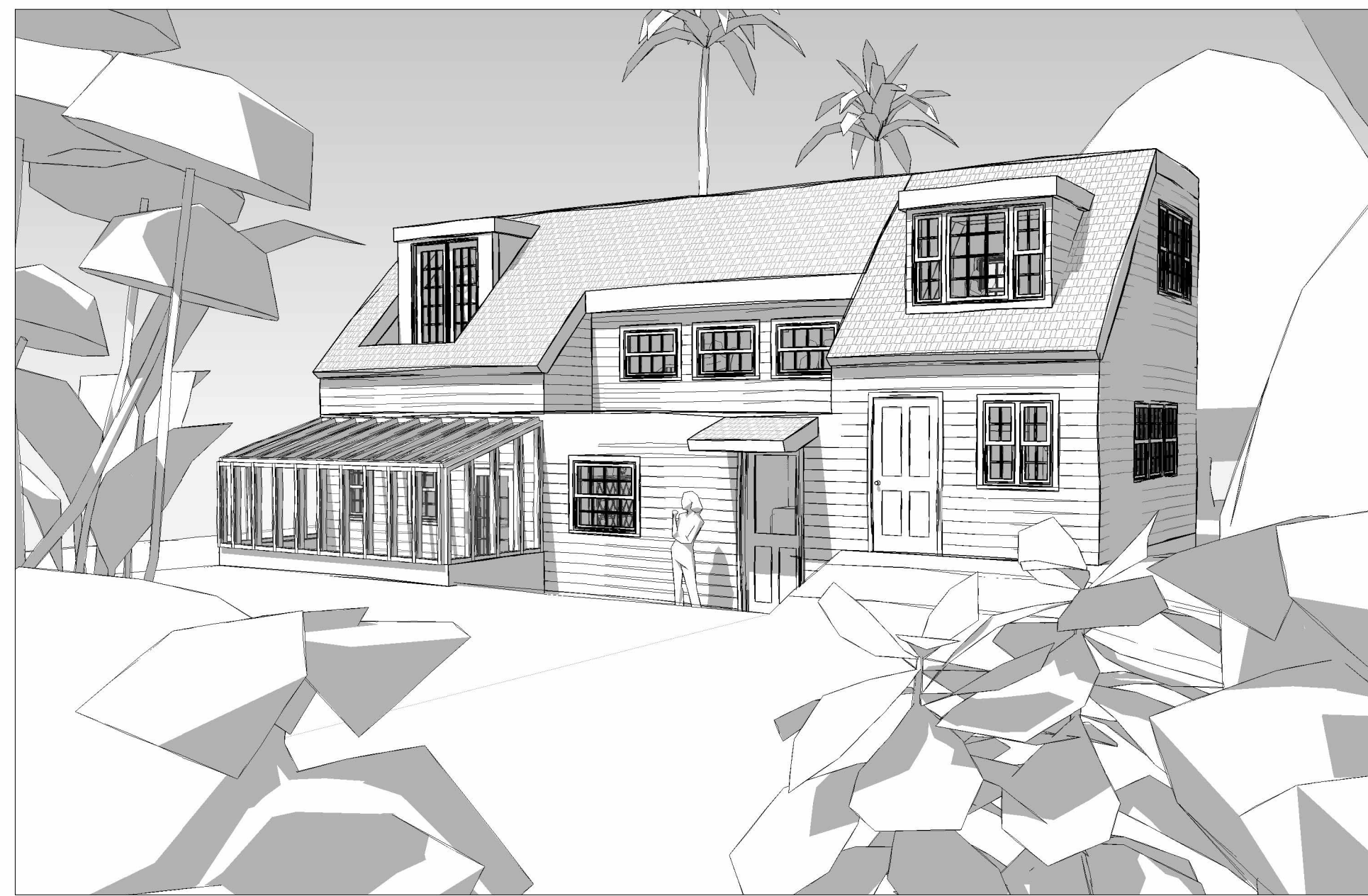


TWO STORIES

INSPIRED BY THE HOME
OF
VIRGINIA WOOLF

AND

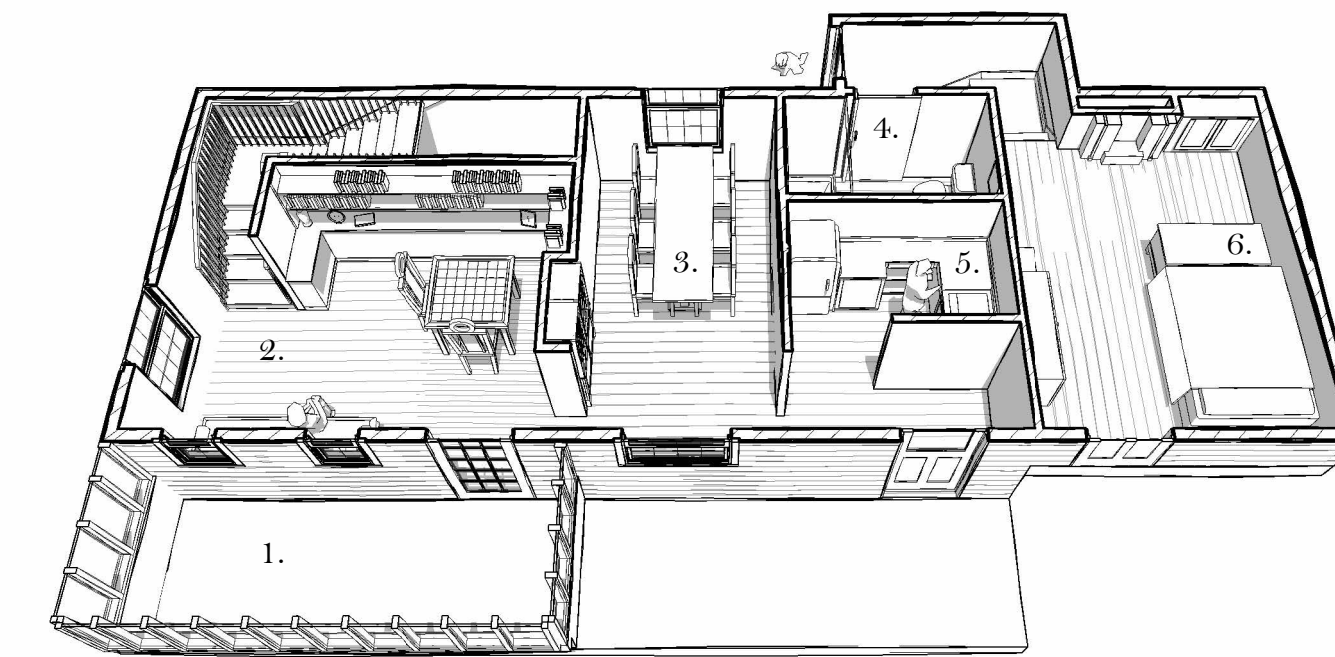
L. S. WOOLF



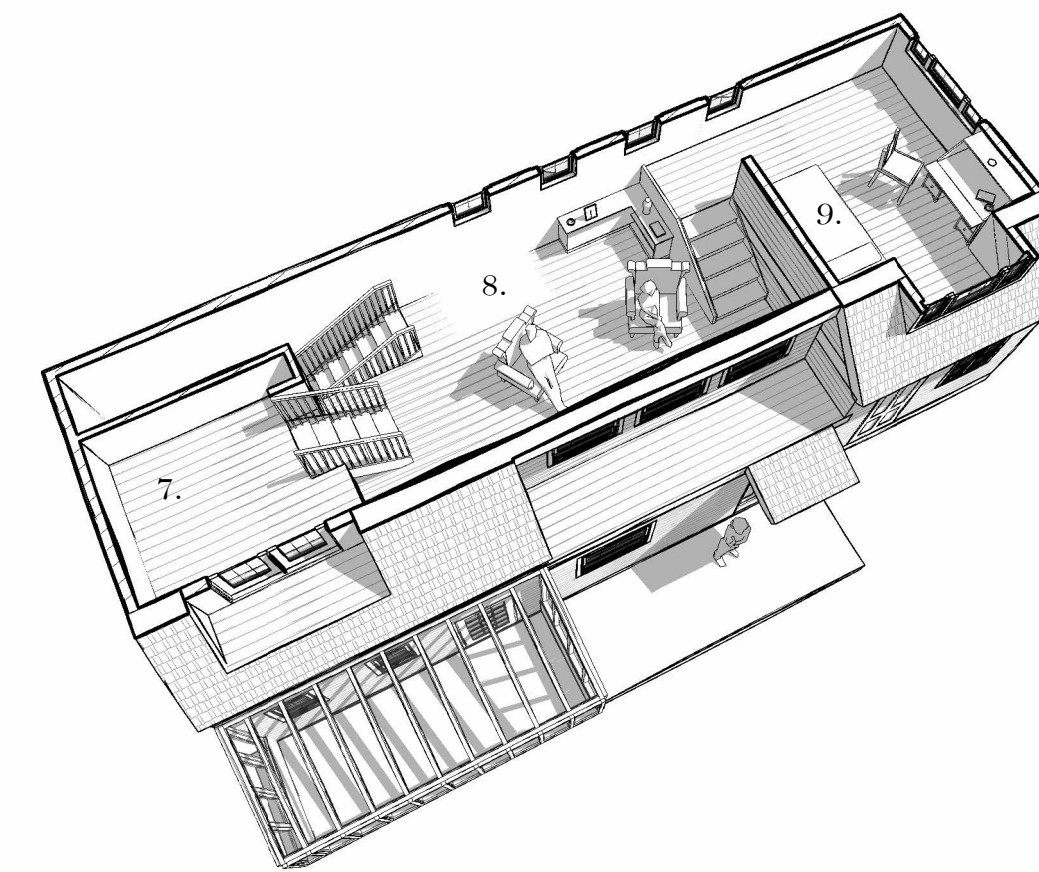
WITH ART AND DESIGN
BY
VANESSA BELL

AND THE

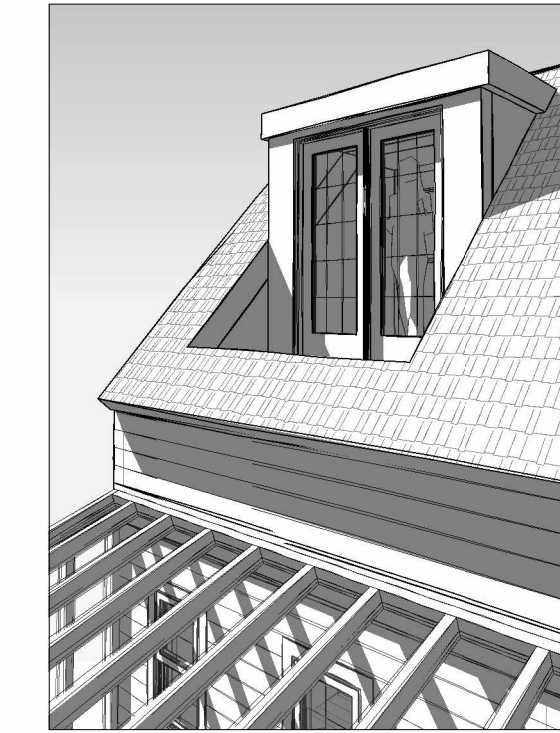
OMEGA
WORKSHOP



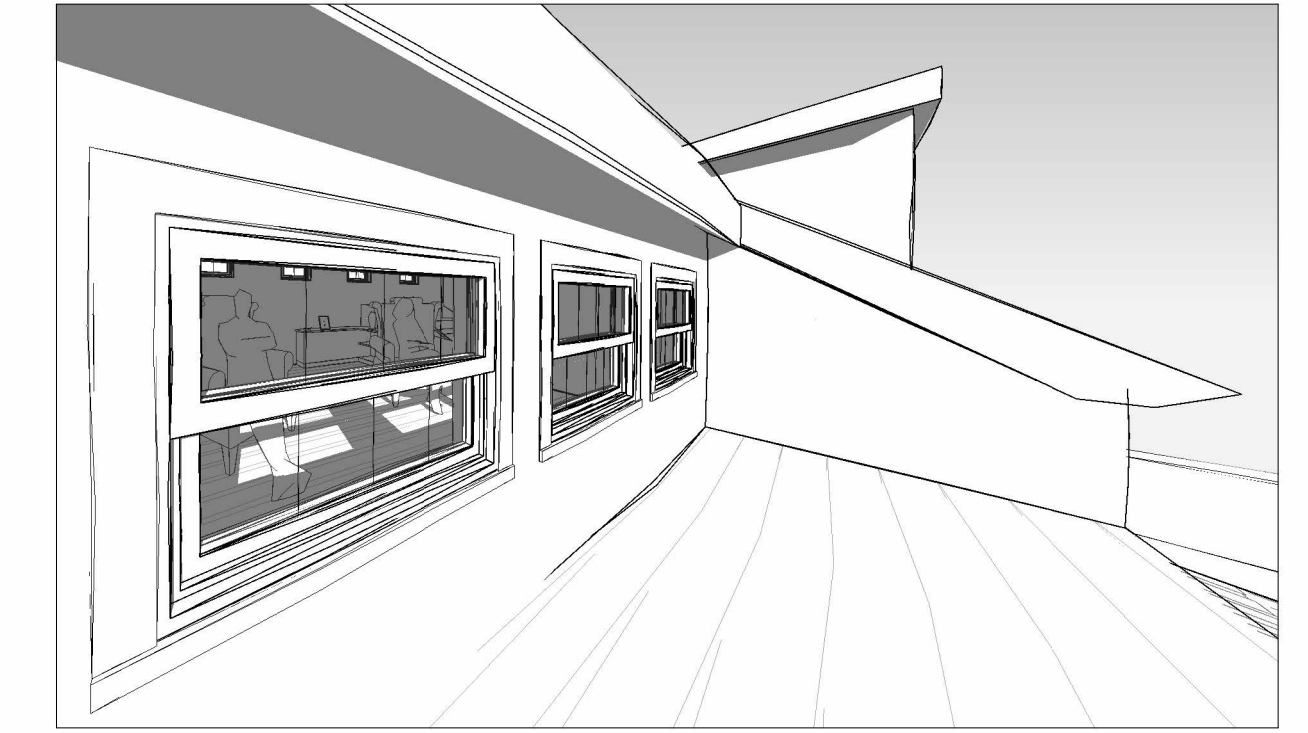
FIRST FLOOR PLAN | FROM LEFT TO RIGHT: 1. GREENHOUSE 2. LIBRARY 3. DINING ROOM
4. BATHROOM 5. KITCHEN 6. BEDROOM



SECOND FLOOR PLAN | FROM LEFT TO RIGHT: 7. VIEWING AREA 8. LIVING ROOM 9. BEDROOM / STUDY



BALCONY OF (7.) VIEWING AREA



LOOKING IN TO (8.) LIVING ROOM



(9.) BEDROOM / STUDY



(5.) KITCHEN



(6.) BEDROOM WITH PORTRAIT OF VIRGINIA WOOLF BY VANESSA BELL



(2.) LIBRARY WITH DOOR AND WINDOWS TO THE (1.) GREENHOUSE



BACKDOOR LEADING TO (6.) BEDROOM AREA, WINDOW LOOKS INTO (3.) DINING ROOM



(3.) DINING ROOM WITH CHAIRS BY THE OMEGA WORKSHOP

DESIGNED AND DRAFTED BY COLIN MACFADYEN
SBCC CLIFF DRIVE SANTA BARBARA CALIFORNIA
MMXXV